

Confitebor terzo

Selva morale e spirituale (1640/41)

Viola I

Claudio Monteverdi



14



20



25



32



38



44



50



56



2

61

61

67

67

73

Exercise 73 is a single-staff piece in bass clef with a key signature of one sharp (F#). The melody is written on a five-line staff. It begins with a whole note G2, followed by eighth notes A2, B2, and C3. The second measure contains a whole note D#3, followed by eighth notes E3, F#3, and G3. The third measure has a half note A3, followed by eighth notes B3 and C4. The fourth measure consists of a half note D4, followed by eighth notes E4 and F#4. The fifth measure is a whole note G4, followed by eighth notes A4 and B4. The sixth measure has a half note C5, followed by eighth notes D5 and E5. The seventh measure is a whole note F#5, followed by eighth notes G5 and A5. The eighth measure consists of a half note B5, followed by eighth notes C6 and D6. The piece ends with a fermata over the final note D6.

79

Exercise 79 is a single staff in 3/8 time. The melody consists of eighth and quarter notes with various rests and ties.

85

Musical notation for exercise 85, a 12-measure piece in 3/8 time. The melody starts on a G4, moves to A4, B4, and then has a dotted quarter note on B4. The second measure has an eighth note G4, an eighth note A4, and a quarter note B4 with a sharp sign. The third measure has a quarter note A4, a quarter note G4, and a quarter note F4. The fourth measure has a quarter note E4, a quarter note D4, and a quarter note C4. The fifth measure has a quarter note B3, a quarter note A3, and a quarter note G3. The sixth measure has a quarter note F3, a quarter note E3, and a quarter note D3. The seventh measure has a quarter note C3, a quarter note B2, and a quarter note A2. The eighth measure has a quarter note G2, a quarter note F2, and a quarter note E2. The ninth measure has a quarter note D2, a quarter note C2, and a quarter note B1. The tenth measure has a quarter note A1, a quarter note G1, and a quarter note F1. The eleventh measure has a quarter note E1, a quarter note D1, and a quarter note C1. The twelfth measure has a quarter note B0, a quarter note A0, and a quarter note G0.

91

Musical notation for exercise 91, featuring a treble clef and a key signature of one flat (B-flat). The melody consists of eighth and sixteenth notes, with a final measure containing a whole note.

98

Exercise 98 is a short melody in treble clef, one sharp (F#), and 2/4 time. It begins with a quarter rest, followed by a quarter note G4, an eighth note A4, and an eighth note B4. The next measure contains a quarter note C5, a quarter note D5, and a quarter note E5. The melody continues with a quarter note F5, a quarter note G5, a quarter note A5, and a quarter note B5. The final measure contains a quarter note C6, a quarter note D6, and a quarter note E6, which is tied to the next measure.

105

105

111

16 8

[illegible]

Confitebor terzo
Selva morale e spirituale (1640/41)
Viola II

Claudio Monteverdi



14



25



32



38



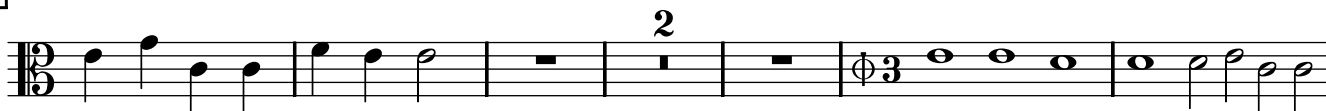
44



51



57



65



73



79



85



94



101



107



113



144



Confitebor terzo
Selva morale e spirituale (1640/41)
Violoncello (Viola) III

Claudio Monteverdi



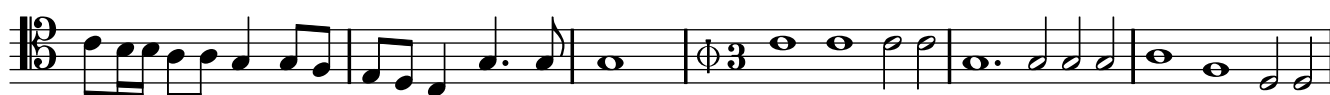
14



25



32



38



44



50



56





71



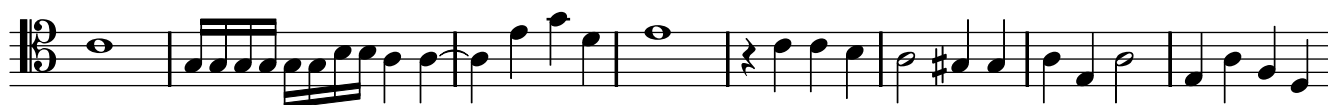
78



86



95



103



110



140



145

